



THE NEW TERMINAL IS NOW A
REALITY — A MILESTONE THAT
REDEFINES PERU'S AIR
CONNECTIVITY WITH THE WORLD.

THE MOST MODERN AND SAFEST AIRPORT IN THE REGION

The New Jorge Chávez Takes Off



Mapa de ubicación



SECURITY, TECHNOLOGY, AND EFFICIENCY

Discover how the new Jorge
Chávez Airport's security control
systems work.

»»» pp. 12-13



A UNIQUE EXPERIENCE OF PERUVIAN IDENTITY

Peruvian culture will be felt
throughout the new airport's
many spaces.

»»» pp. 8-9



The New Jorge Chávez opens its doors to the world

THE MODERN TERMINAL WAS OFFICIALLY INAUGURATED IN AN EMOTIONAL CEREMONY ATTENDED BY THE PRESIDENT OF THE REPUBLIC. THIS EVENT MARKS THE BEGINNING OF A NEW ERA FOR PERU, WITH A WORLD-CLASS INFRASTRUCTURE.

The day that will forever remain in the hearts of all Peruvians has arrived: our country has taken a giant step toward the future. Before the eyes of many distinguished guests, President Dina Boluarte officially inaugurated the New Jorge Chávez International Airport.

The President of the Republic expressed what all Peruvians feel: "Today, we can say that Peru takes flight with the strength of its people. This is not just a monumental project—it is living proof of our ability to turn dreams into concrete achievements through effort, courage, resilience, and a grand vision carried out by Peruvian hands."



More than 120,000 direct and indirect jobs are expected to be generated in 2025, driving economic development in Callao and across the country.

Minister of Transport and Communications, César Sandoval, stated that "the new Jorge Chávez is much more than infrastructure. It is a symbol of a modern Peru, connected to a vision of the future. A new stage of development takes off here, as this is a driving force for the entire country." His words, in just a few lines, captured the shared commitment of the State and the private sector: to deliver a terminal that triples the capacity of its predecessor and is designed with spacious halls, large windows, and cutting-edge technology—to better serve those arriving in, departing from, or connecting through Peru.

A dream come true

Throughout the ceremony, there were heartfelt acknowledgments of the efforts of thousands of Peruvians who dedicated their talent and commitment to every



"Peru is back in the spotlight — once again a meeting point and a place to come together. Welcome to Peru, welcome to all tourists, welcome to investment. Long live Peru."



Dina Boluarte Zegarra
President of the Republic



César Sandoval
Minister of Transport and Communications

"This is not just an impressive feat of engineering — it is a statement of confidence in Peru and in its development potential."



Juan José Salmón
CEO of Lima Airport Partners

"A new stage of development takes off here, as this is a driving force for all of Peru."

detail. Juan José Salmón, CEO of Lima Airport Partners (LAP), gave special recognition to the more than 10,000 Peruvian workers who made this project possible.

"Their effort and professionalism are the foundation of this

achievement we present to the country today. Today, the heart of Peru beats stronger as we inaugurate this magnificent gateway connecting our homeland to the world," he declared, recalling that behind every pane of glass and every boarding bridge, there was

a carpenter, an electrician, an installer, and an engineer—each one sharing the same goal: to see the country soar.

The ceremony also featured expressions of support from partners who have long believed in

Peru. Sabine Bloch, Germany's ambassador to Peru, highlighted her country's technical and financial cooperation over more than 60 years and affirmed that, with LAP, "we will be long-term partners in many future projects that strengthen Peru's development."

Her presence symbolized the trust the world places in this project—and, through it, in the sustainable growth of Peru's economy and industries.

An airport with a peruvian soul

The new Jorge Chávez Airport is impressive not only for its scale — 270,000 m² designed to serve 30 million passengers per year — but for the way it embraces what is uniquely ours. From terraces adorned with murals honoring our regions to lounges showcasing local products and crafts, every corner tells the story of Peru's rich diversity.

Starting June 1st, all domestic and international flights will operate from this magnificent gateway — a factory of dreams that blends bold, state-of-the-art design with the warmth and hospitality that define our country.

This new terminal stands as a living symbol of a Peru that, with wings spread wide, flies with determination toward even greater horizons.



JORGE CHÁVEZ:
A SYMBOL OF A
MODERN AND
RELIABLE PERU

EDITORIAL

Peru is taking a decisive step toward the future with the inauguration of the new Jorge Chávez International Airport — an infrastructure project that goes beyond its physical dimensions to become a true symbol of modernity, connectivity, and confidence in the country's potential.

This megaproject, the result of a private investment exceeding US\$ 2 billion, represents more than just a passenger terminal: it is a statement of faith in Peru's economic and social development.

The new Jorge Chávez stands as one of the main gateways into the country and as a strategic service hub in South America. Its proximity to the ports of Callao and Chancay — which together handle 80% of Peru's container traffic — positions this airport at the heart of an unprecedented multimodal logistics corridor in the region.

This integration not only streamlines trade and transport but also strengthens Peru's standing as a key platform for investment and regional competitiveness.

This airport would not have been possible without the joint efforts of over 10,000 Peruvian workers, as well as the vision and commitment of Lima Airport Partners, Fraport AG, and the IFC. Since the concession began in 2001, air traffic in Peru has been transformed — rising from 4.1 million passengers to nearly 25 million in 2024. This over 600% growth is a testament to the impact that well-executed public-private partnerships can have.

The inauguration of the new Jorge Chávez also brings to the forefront the urgency of modernizing and expanding regional airports. With more than US\$ 3.4 billion already contributed to the infrastructure trust fund, and another US\$ 8 billion projected, this is the ideal moment to move toward a truly decentralized airport system.

Ultimately, this airport doesn't just connect destinations — it connects dreams, opportunities, and futures. It reflects the resilience of a country capable of overcoming challenges, joining efforts, and delivering world-class achievements.

Today, more than ever, Peru is ready to soar higher.

Juan José Salmón
CEO, Lima Airport Partners

A New Way to Travel

The New Jorge Chávez has everything you need for a faster and safer travel experience.

Fixed bridges and modern jetways allow simultaneous boarding and disembarkation for arriving and departing passengers.



Over 400 information screens throughout the airport showing flight status, boarding gates, and check-in areas.



42 self check-in kiosks for passengers to manage their travel check-in independently.



More than 30 TUAU machines faster and more advanced, offering greater convenience for passengers.



27 inspection lines with CT scanners offering 360° imaging—no need to remove liquids or electronic devices.



Over 120 check-in counters by the end of 2025, ready to serve up to 40 million passengers.



59 boarding gates including 46 with jetways and 13 remote gates for domestic, international, and mixed-use flights.

THE NEW INTERNATIONAL AIRPORT IS PART OF THE AIRPORT CITY — A ONE OF A KIND DEVELOPMENT IN THE REGION

This Is How the New Jorge Chávez Was Built



2001
LAP Begins Operations
We began operating the concession of Jorge Chávez International Airport.



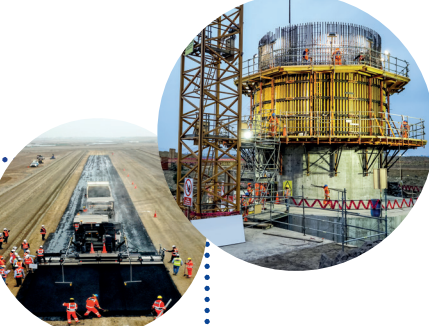
2018
Land Transfer for the New Airport
We received the land from the State to begin construction of the New Jorge Chávez International Airport.



2019
Construction Work Begins
Construction of the New Jorge Chávez International Airport officially began.



2020
Start of Key Infrastructure Works
We began construction of the new control tower and the second runway.



2022
Terminal Foundation Work
Installation of the new terminal's foundation began.



2024
Parque Logístico Callao Begins Operations
The commercial project of the new Jorge Chávez Airport City started operating.



2023
New Control Tower and Second Runway Operational



2024
First fuel tank filled at the new fuel plant, ensuring continuous operation of the new airport.



2024
New Airport Police Station was built and delivered to the National Police of Peru, reinforcing airport security and order.



Over 1,100 base isolators were installed on the basement columns



2025
Launch of the New Jorge Chávez International Airport
Operations begin, offering passengers a modern, efficient, and secure travel experience.

Construction of the New Passenger Terminal

In less than three years of work, the new terminal is now ready to receive over 30 million passengers, and by the end of 2025, it will be equipped to serve more than 40 million.



June 2022



March 2023



January 2024



February 2025

THE ONLY PASSENGER ACCESS TO THE NEW TERMINAL IS VIA AV. MORALES DUÁREZ — ACCESS FROM AV. FAUCETT IS CLOSED

How to Enter and Exit the New Jorge Chávez Airport



IF YOU'RE ARRIVING FROM A FLIGHT...

- Picked up by a family car or Cabify/Uber**
 Pick-up takes place in: **E1 (Cabify) or E2 (Uber)**
 Exit toward the parking lots on Level 1.
- Taking AERODIRECTO (Public Transport)**
 Go up to Level 2 and exit through the Boulevard toward the bus stops on **Vía Libre**.
- Short-Term Parking**
 Pick-up is at Vía Libre or at the designated station. Go up to Level 2 and walk through the Boulevard to reach **Vía Libre**.
- Request an Authorized Taxi**
 (Taxi 360, Directo or Taxi Green)
 Pick-up point: Controlled Access Area (**Level 1**).
- Taking Airport Express**
 Boarding point and ticket booth in the Controlled Access Area (**Level 1**).
(Round trip service to/from the terminal)

Separate Access Points to Enhance the Travel Experience

The New Jorge Chávez Airport is designed to operate with separate passenger flows for departures and arrivals, with the goal of offering a smoother and more efficient travel experience.

Passengers flying on domestic routes must go to the third level of the terminal for departures. This level is accessible via Vía Libre using taxis, private

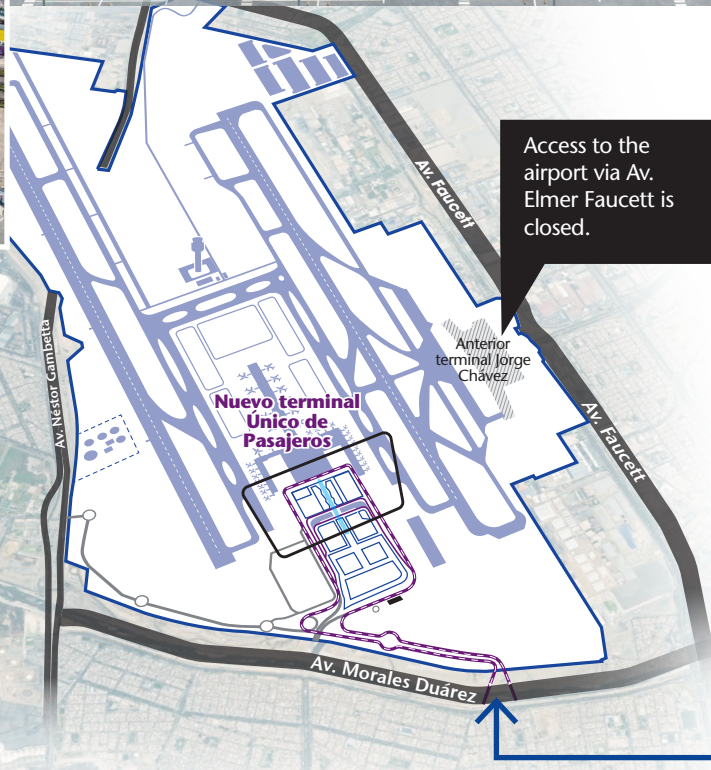
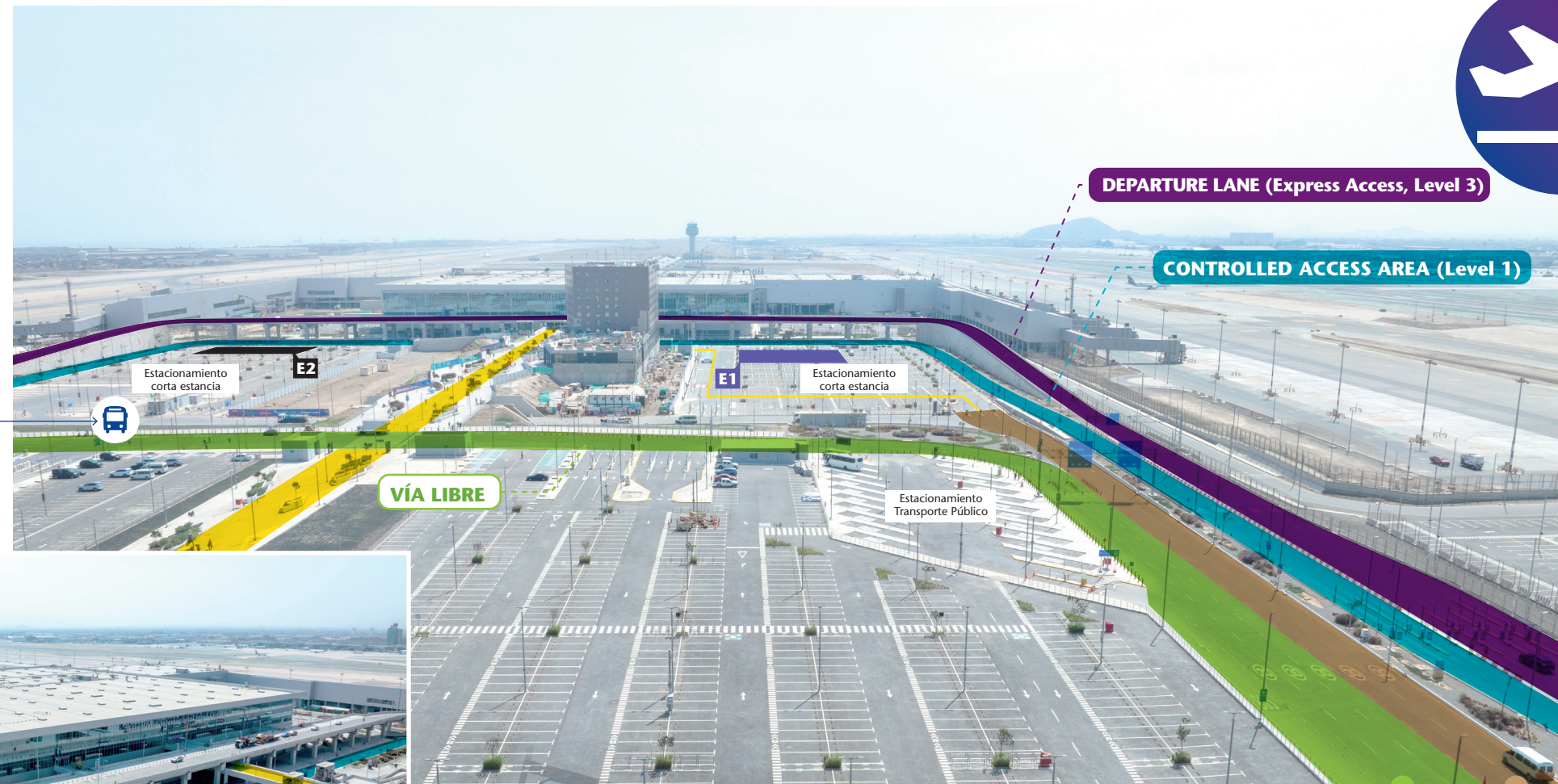
vehicles, or by entering through the Boulevard on Level 2. From there, elevators and ramps connect passengers to Level 3 if they arrive by public bus or after parking their vehicle.

Meanwhile, arriving passengers will exit through the first level of the terminal after collecting their baggage. From there, they will have access to

taxis, public buses, or parking areas.

Additionally, the entire layout of the Passenger Terminal has been designed to be intuitive, ensuring that both domestic and international passengers can move through security and boarding processes smoothly and separately, according to the type of flight they are taking.

Pedestrian access to and from the terminal is available through Levels 1 and 2.



The Only Entry and Exit for Passengers at the New Jorge Chávez Is via Av. Morales Duárez



Modular bridges on Av. Morales Duárez are the entrance to the New Jorge Chávez.



IF YOU ARE DEPARTING...

- I arrive by taxi**
 The taxi has 10 minutes to enter and exit the lane*.
- I arrive in a private vehicle (family or friend)**
 My family member or friend has 10 minutes to enter and exit the lane*.
- I arrive in a private vehicle (family or friend) and they want to accompany me**
 We park the car in Parking Lot E1 or E2 and enter together via ramps or elevator through **Level 2**.
- I arrive by Airport Express**
 It drops me off in front of the terminal. Once inside, I go up to Level 3 (Departures).
- I arrive by Aero Directo (public transport)**
 It drops me off at Vía Libre. I enter the terminal on foot through the **Boulevard**.

*Los conductores que exceden los 10 minutos en la vía de salidas pagarán penalidad de S/40 soles.



Pedestrian access is through Level 2, via the Boulevard.

MORE THAN JUST A TERMINAL: A LIVING SHOWCASE OF WHO WE ARE AND WHAT WE SHARE WITH THE WORLD

The New Jorge Chávez Airport Breathes Peruvian Identity

The new airport will radiate Peruvian identity in every corner, with a concept designed to showcase the country's rich diversity and cultural heritage. From its

functional architecture — inspired by Peru's deep-rooted traditions — the terminal's very shape echoes that of the hummingbird, one of the iconic Nazca Lines.

Lima's new air terminal aims to become the first airport in the region to offer an iconic culinary experience, bringing together some of the most renowned names in Peruvian gastronomy, including Gastón Acurio, Mitsuharu Tsumura "Micha", Jaime Pesaque, José del Castillo, Coque Ossio, among others.

As they move through the new airport, passengers will encounter numerous design elements inspired by Peru's regions — from iconic sculptures and storefront decor to plant motifs in rest areas, color accents



The architecture of the New Jorge Chávez is inspired by Peru's rich cultural heritage. The terminal itself is shaped like a hummingbird — one of the iconic geoglyphs of the ancient Nazca civilization.



in restrooms, and vibrant displays of Peruvian landscapes on screens and stained-glass installations — all coming together to form a true showcase of Peruvian identity.

Along the corridors, passengers will see panels showcasing breathtaking landscapes from the coast, highlands, and jungle — all framed by a contemporary graphic design style.



At the entrance of the terminal, a large-scale quipu can be seen, featuring stylized iconography inspired by the pre-Hispanic era.



Our airport fills all Peruvians with pride, as it represents our cultural heritage and shares it with the world.



The new airport features a diverse cultural showcase of Peruvian products, with prime locations highlighting alpaca and vicuña goods, and family-friendly souvenirs — all with Peru's renowned quality.

A dedicated space has also been reserved for top-tier handicrafts and souvenirs, offering passengers a new and unforgettable cultural experience.



Peruvian Gastronomy: The Star of the Commercial Offering

The new terminal brings together the top names in Peruvian cuisine, offering a unique culinary experience for both domestic and international travelers.

ICONIC ELEMENTS

UKU & KUKI (Mother Bear and Cub)

These characters, created by artist Haroldo Higa, are deeply inspired by Peruvian myths and legends. UKU, a spectacled bear, and her cub KUKI, are rooted in the

figure of the Ukuku — a character from the Andean worldview who symbolizes the guardian of sacred mountain sites and a messenger of prosperity, connecting Peruvian communities by carrying water from the Andes to the coast.

OTO (Jaguar)

In the Kay Pacha — the astral plane of the "here and now," and also the earthly world where humans interact with nature and with one another — the jaguar is a symbolic and powerful animal.

It represents strength, courage, and connection to the earth. A natural teacher, the jaguar guided ancient Andean communities to respect the delicate balance of Pachamama, or Mother Earth.



Designed by Jumping Lomo and produced by Creadictiva.

MARU (Serpent)

In the realm of Uku Pacha, the underworld within the Andean worldview, dwell the ancestors — spiritual guardians who watch over the community, offering wisdom and ensuring the continuity of life.

This is a realm where ancient roots and spiritual mysteries converge. There, the serpent — or Amaru in Quechua — is the guardian of secrets. It moves through cave tunnels, connects with underground waters, and serves as a bridge between the spirit world and humanity. The serpent symbolizes fertility, the cycle of life and death, and the power of constant renewal.

KROA (Frog)

This figure, specially created by artist Haroldo Higa, pays tribute to the richness of the Peruvian Amazon. The work is inspired by the Mayantú, a mythical sage who embodies the knowledge of medicinal plants and the ancestral wisdom of the rainforest. KROA evokes the protective spirit of the Amazon, reminding us of the importance of living in harmony with nature.

KUNTUR (Condor)

In the Hanan Pacha — the celestial plane or spiritual world where Andean deities and higher beings reside — the condor reigns supreme. This majestic bird symbolizes the connection to the divine, spiritual elevation, and wisdom.





The New Airport successfully begins operations in Trial Phase

The new terminal of Jorge Chávez International Airport took a significant step toward full operation with the start of its trial phase on May 15. This operational testing period, which continued through May 31, aimed to ensure the efficiency and safety of all operations ahead of the official inauguration on June 1.

The first flight during this stage was operated by Aerolíneas Argentinas, marking the beginning of a series of operations that allowed systems and processes at the new terminal to be evaluated and fine-tuned. Over this period, five airlines actively participated in the testing, enabling a comprehensive assessment of the facilities and services.

The new terminal—built with an estimated investment of US\$ 2.4 billion—triples the capacity of the previous one, spans 270,000 m², and is designed



to serve 30 million passengers annually. Among its standout features are next-generation security systems, including CT scanners for baggage screening, and a pre-check system that will streamline immigration procedures.

Additional improvements have been implemented to enhance access to the airport,



including the installation of modular bridges and the launch of the "AeroExpreso" public transport service, making it easier for passengers and airport staff to arrive and depart.

First Passenger Testimonials

Zoila Calderón, 75, became the first passenger to board a

flight from the new terminal. Overjoyed, she said: "It's a gift from God. I feel happy to be part of this historic moment for the country."

Meanwhile, Gonzalo Waisman, a 22-year-old Argentine, was the first passenger to arrive at the new airport. Surprised by the welcome, he remarked: "I felt like Justin Bieber for three minutes. I didn't

know I was the first passenger to arrive. It was an incredible experience."

With these milestones, the new Jorge Chávez International Airport is positioned as a strategic hub in South America, reaffirming Peru's commitment to modernizing its airport infrastructure and continuously enhancing the passenger experience.

Boarding Gates at the New Jorge Chávez Airport

59
boarding gates

(Including jet bridges and remote gates with shuttle buses)

Floor 3:
46 gates with jet bridges

Floor 1:
13 remote gates with shuttle bus service

FLOOR 1
Concourse
B
Domestic and international flights

FLOOR 3
Concourse
C
Domestic and international flights

FLOOR 3
Concourse
A
Domestic flights

FLOOR 3
Concourse
D
International flights

Entrance Floor 3
Vehicle access only, exclusively for dropping off passengers (max. 10 minutes).

Entrance Floor 2
Pedestrian access via the Boulevard from Via Libre (280 meters).

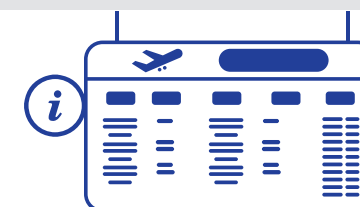
How to Reach Your Boarding Gate:

Upon entering the New Jorge Chávez, follow the signs to the right, left, or straight ahead to the central pier, depending on your flight type.

International Flights:
Left pier (Floor 3) and central mixed-use pier (access from Floor 4)

Domestic Flights:
Right pier and central mixed-use pier (Floor 3)

Scan the QR Code
Access the interactive map created by Lima Airport to quickly locate your gate within the terminal.



Always check the flight information screens
Located throughout the terminal.



A New Passenger Experience: Modern and Secure

THIS NEW TERMINAL EMBRACES TECHNOLOGY AND EFFICIENCY, FEATURING A MODERN SYSTEM DESIGNED TO MAKE THE CHECK-IN PROCESS COMFORTABLE AND SECURE FOR ALL PASSENGERS.

At its opening, the new Jorge Chávez will feature three islands with 90 check-in counters and 42 self-service kiosks, ready to serve up to 30 million passengers during its first year of operations.

By the end of 2025, a fourth island is expected to be completed, along with the implementation of 120 addi-

tional counters, increasing the airport's capacity to 40 million passengers per year.

Additionally, six specialized counters will be available in 2025 for oversized baggage such as tents, surfboards, and animal transport crates, among others.

In the new terminal, passengers will also have access

to machines that allow fast and efficient flight registration, including boarding pass and baggage tag printing (for those checking bags).

This will be the first airport in the region to feature 27 hand luggage screening machines for domestic, international, and connecting flights—ensuring maximum security. Each CT scanner will inspect

between 300 and 400 carry-on bags.

The terminal will also include 4 CT scanners for checked baggage and more than 7 kilometers of conveyor belts spanning the entire baggage system—from check-in to final boarding. This advanced system will allow for the inspection of over 2,700 checked bags per hour.



CHECK IN IN JUST A FEW STEPS



With the new self check-in system, flying is easier than ever:

1. Tap your airline's logo.
2. Enter your flight code and personal details.
3. Choose whether to

print your boarding pass or baggage tag.

4. And you're done!
If you have checked baggage, go to the self-service bag drop (if available with your airline) or head to a traditional counter.

Your journey begins with comfort and technology.

If you're only carrying hand luggage, go straight to security and enjoy.

Traveling has never been this easy!



NEW CARRY-ON SECURITY CHECKPOINT



With next-generation CT scanners, there's no need to remove your liquids or electronic devices. Everything is screened automatically, safely, and efficiently.

How does it work?

1. **Place your luggage on the tray.**
You'll find the trays on the side of the screening lane.

2. **Gently slide the tray forward.**
Sensors and rollers will take care of the rest — your bag will move

through the scanner automatically.

3. **Walk through the security arch.**
A non-invasive body scanner will detect any metallic objects.

4. **Collect your luggage.**
If everything is in order, your tray will be waiting at the end of the line. And you're all set!

Keep in mind:

- If a suspicious item is detected, the tray will be automatically diverted to a manual inspection line for detailed screening.
- Items such as thermometers, knives, weapons, tools, toy guns, weights, or flammable substances are prohibited.

For more information, visit:

nuevojorgechavez.com

Next-Generation Control Centers

EQUIPPED WITH SMART SYSTEMS AND DIGITAL SOLUTIONS NEVER BEFORE SEEN IN THE REGION, THE NEW AIRPORT MARKS A TURNING POINT IN OPERATIONAL STANDARDS.



The operation of the new Jorge Chávez Airport represents a technological revolution in the airport industry across the region. From its opening, the terminal will feature modern solutions that raise the standards of efficiency, security, and passenger experience. Here are the main innovations driving this transformation:

1. Digital Apron Management System (DAMS)

The new Jorge Chávez marks a milestone in the region by becoming the first airport to implement a Digital Apron Management Service. This system provides precise guidance to pilots as aircraft move across the apron—from landing to parking positions and back—enhancing both safety and operational efficiency.

With the new terminal in operation, this service is now managed from a state-of-the-art digital control center, equipped



with cutting-edge technology that improves operational visibility, streamlines decision-making, and elevates safety standards.

Thanks to its fully digital design, the DAMS eliminates the need for direct tower supervision, enabling faster, remote, and more reliable apron operations.

2. Airport Operations Control Center

This innovative center manages, in real time, all resou-

rces related to passenger and aircraft services. It controls flight information displays, baggage carousels, boarding gates, and aircraft parking positions, ensuring smooth and coordinated operations.

3. Security Control Center

With an integrated network monitoring 3,900 CCTV cameras—nearly five times more than the previous terminal—this high-tech center provides real-time



surveillance across every corner of the airport. It also manages strict access control to restricted areas and perimeter surveillance, ensuring rapid response to any incident.

4. Maintenance Control Center

A new facility designed to efficiently manage the airport's infrastructure in real time, ensuring continuity and operational excellence.

5. Technology Control Center

This center ensures the optimal performance of all IT systems operating within the new Jorge Chávez Airport.

6. Passenger information screens

Over 400 vertical-format information screens have been installed throughout the new terminal, allowing passengers to easily check real-time flight status and updates.

7. Modern E-Gates

18 new e-gates for TUUA control reduce validation time from 3 seconds to just 20 milliseconds per passenger, enabling the processing of up to 4,500 passengers per hour.

8. Next-Generation CT Scanners

The new Jorge Chávez leads the region by introducing 27 advanced CT scanning lines for carry-on and checked baggage inspection. These scanners generate high-resolution 3D images, allowing for faster and more accurate screening—without passengers needing to remove laptops or liquids.

This innovation raises security standards and significantly enhances the overall travel experience.



New Jorge Chávez

This US\$ 2 billion investment represents a landmark in strengthening Peru's connection to the world through air travel.

New Control Tower

IN OPERATION



Second Runway

IN OPERATION



New Passenger Terminal

IN OPERATION

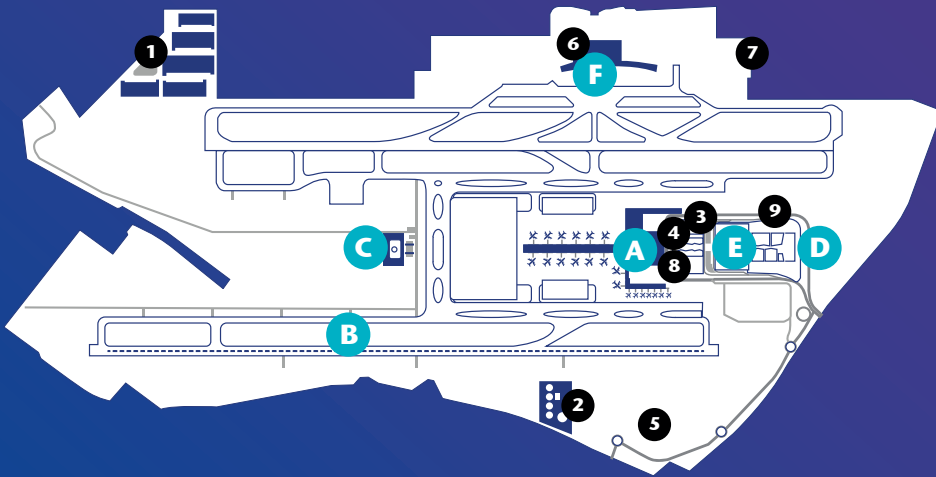


Rehabilitation of First Runway

DELIVERY IN 2025



The New Jorge Chávez is part of the airport city — a unique concept in the region.



TOTAL AREA:
935 HECTARES

LAP INVESTMENT:
US\$ 2 BILLION

EXTERNAL PRIVATE INVESTMENT
(COMMERCIAL AREAS)
US\$ 400 MILLION

LAP INVESTMENT:

- | | |
|---------------------------|---------------------------------|
| A. New passenger terminal | and rescue station |
| B. New runway | D. Taxi area and police station |
| C. New control tower | E. Parking lot |

COMMERCIAL AREAS (External Private Investment)

- | | | | |
|--------------------------|---|--|--|
| 1. Callao Logistics Park | 4. Other Commercial Developments | 6. Future Commercial and Aeronautical Developments | 8. Office Building, Customs warehouse, cargo storage facilities, ground support center, fuel station |
| 2. New Fuel Plant | 5. Area Reserved for Logistics Use and Future Free Trade Zone | 7. Air Cargo Transfer Center | |
| 3. Hotels | | | |



AIRPORT
JORGE CHÁVEZ

DISCOVER THE FREE SERVICES OFFERED BY THE
NEW JORGE CHÁVEZ AIRPORT

Services for everyone

The New Jorge Chávez is a fully inclusive and accessible airport, offering free services for all passengers and visitors. A wide range of services is at your disposal — everything has been designed to ensure comfort, guidance, and support for people with different needs.

Information desks



Find them at Check-in, in the arrivals area, and in the domestic and international departure halls.



FREE Call Modules



Now you can make free national and international calls (up to 5 minutes) from our call modules located throughout the terminal.

Digital Services

Get guidance with our Chatbot

Ask about your flight, find your boarding gate, and get support through our virtual assistant.



Use our Interactive Map

Find any area within the New Jorge Chávez right from your mobile device, using geolocation.



Enjoy our Free Wi-Fi!



FreeWifiJorgeChavez

Visit our Website

nuevojorgechavez.com/



Sunflower lanyard:

If you're traveling with someone who has a non-visible condition (e.g., autism, Alzheimer's, among others) — or if you have a non-visible condition yourself — request a sunflower lanyard to receive assistance tailored to your needs.



Wheelchairs

Request one by presenting your ID at our information desks.* Please note that wheelchairs are for use exclusively within the terminal.



Nursing room

A comfortable and private space for mothers who are breastfeeding or need to attend to their baby's needs.



Luggage carts

Available in the parking lots, public areas of floors 1, 2, and 3, and at the beginning of the boulevard.



24/7 Call Center

For inquiries or assistance, call us anytime at 01 517-3500.



Strollers for babies

Request one by presenting your ID at our information desks. Strollers are available for children under 3 years of age.



Lost and found office

If you left an item inside the terminal, visit our office on the 3rd floor from 8:00 a.m. to 8:00 p.m., or go to lima-airport.com.



Phone charging stations

Charge your phone at stations throughout the terminal.



Sign language support

We are an airport for everyone. We offer assistance in sign language.

The New Jorge Chávez has everything you need for a unique and comfortable experience before your flight.